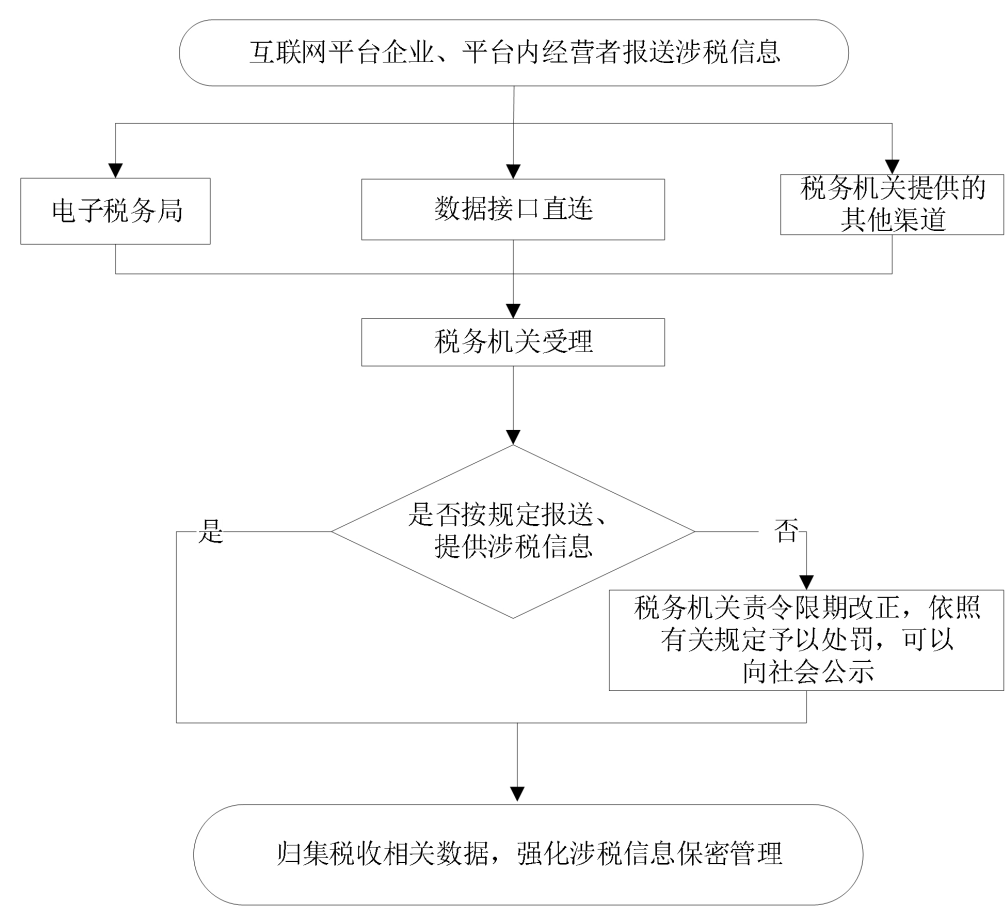


税务行政职权运行流程图

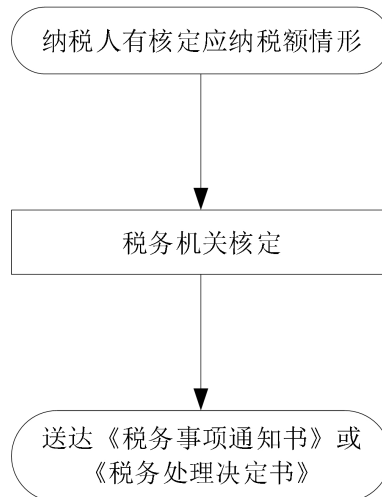
一、税务管理

082400 涉税信息报送管理

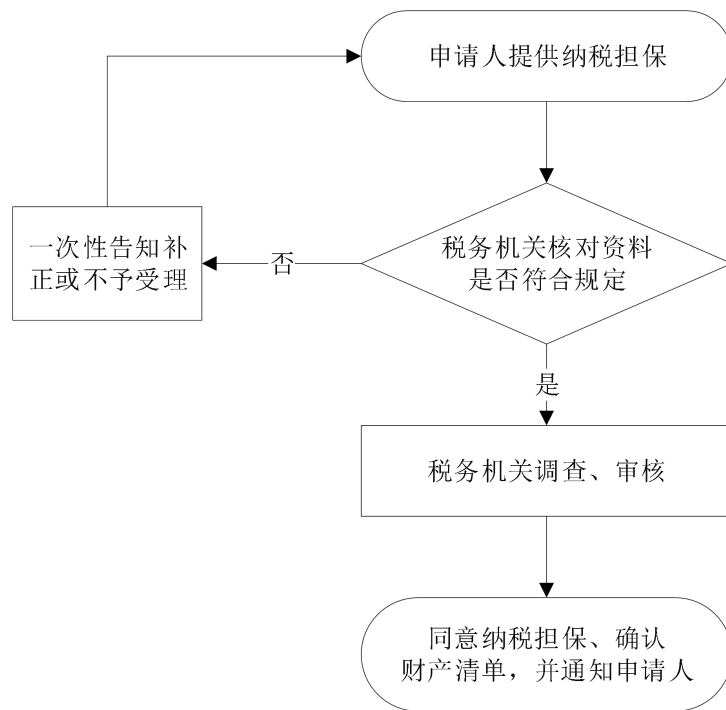


二、税费征收

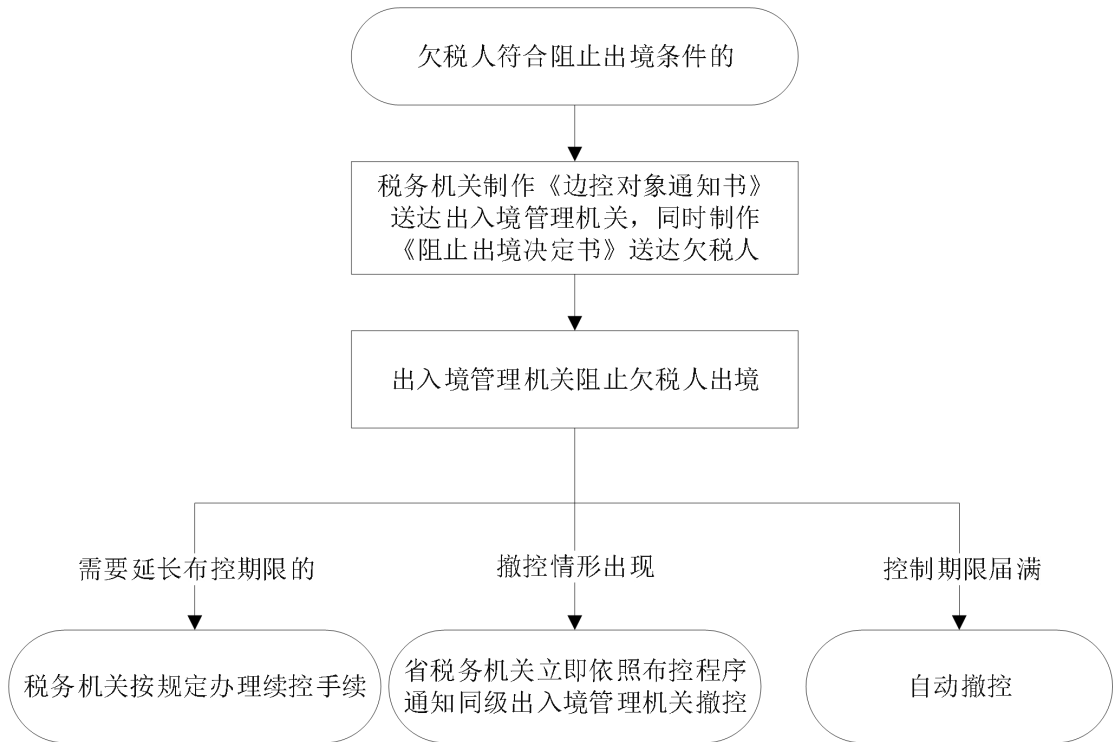
012200 核定应纳税额



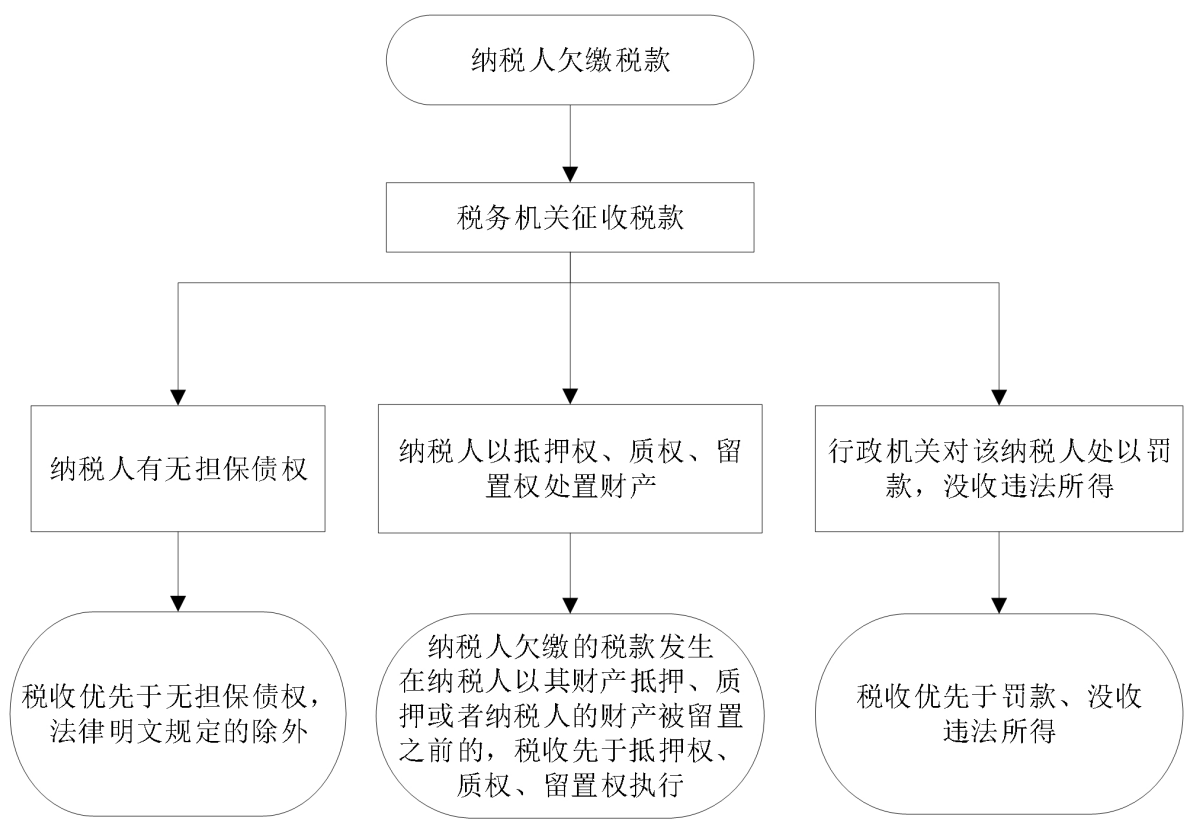
060600 对纳税担保的确认



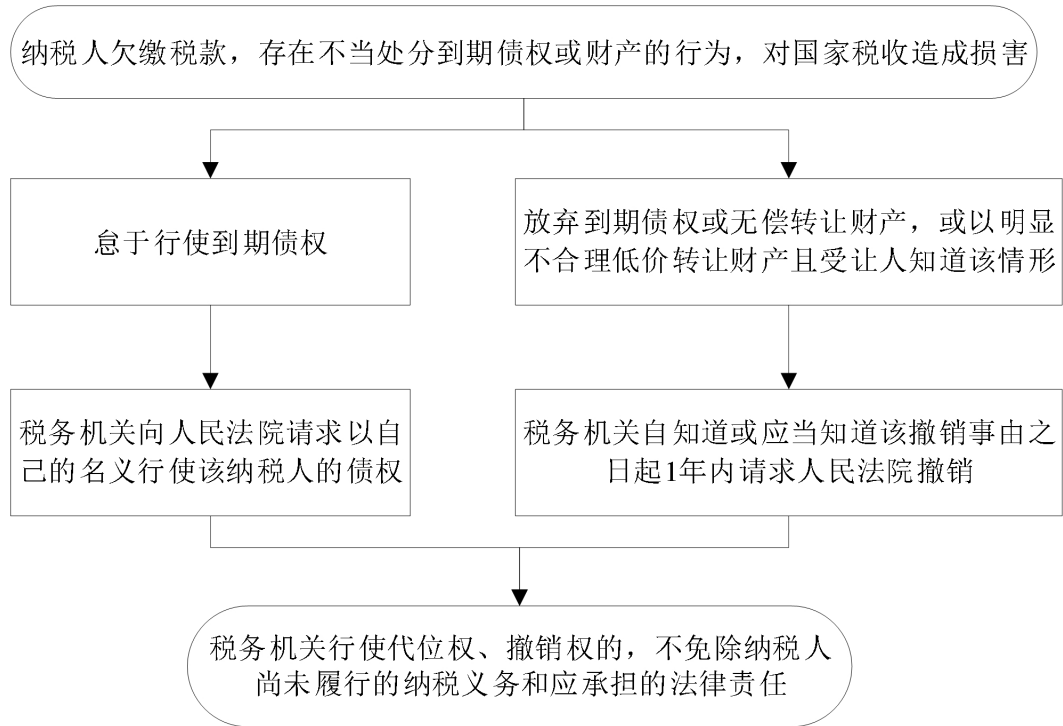
081000 通知出入境管理机关阻止欠税人出境



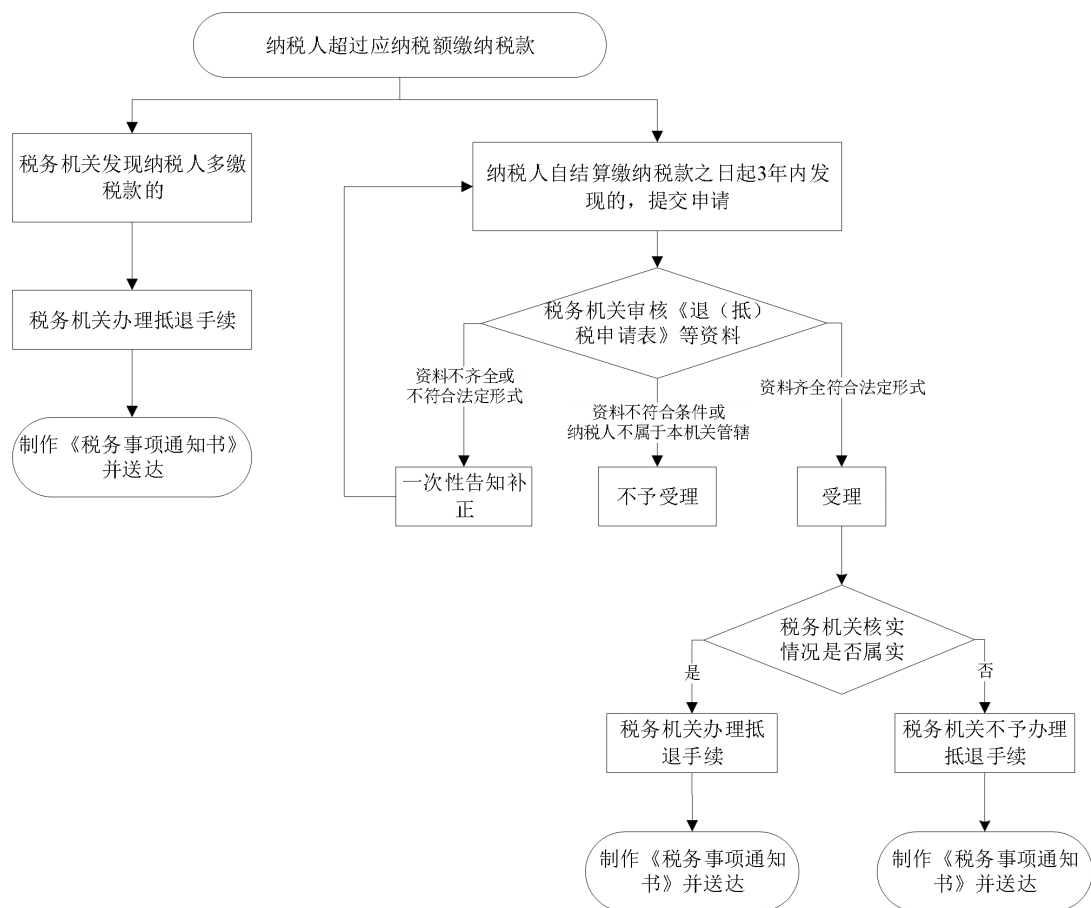
012400 税收优先权



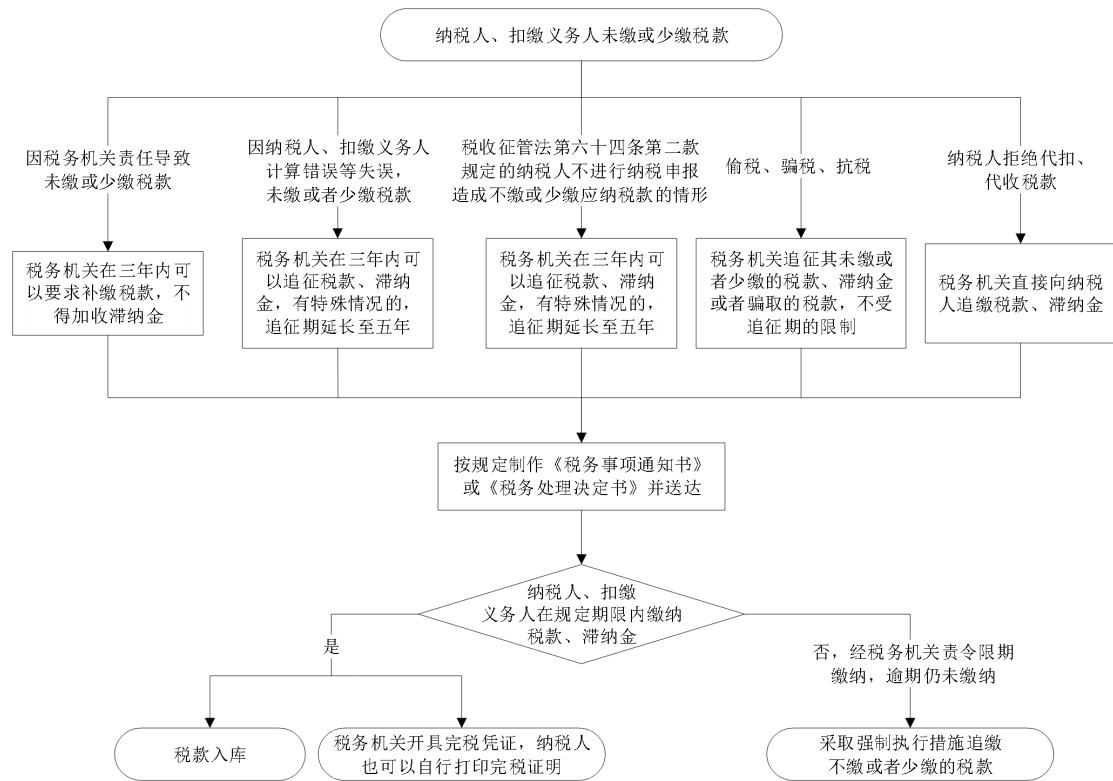
012500 代位权、撤销权



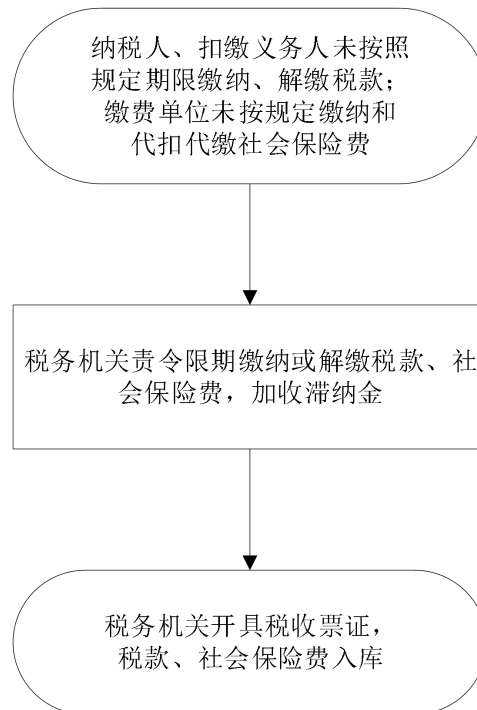
012600 多缴税款退（抵）



012700 税款追征追缴

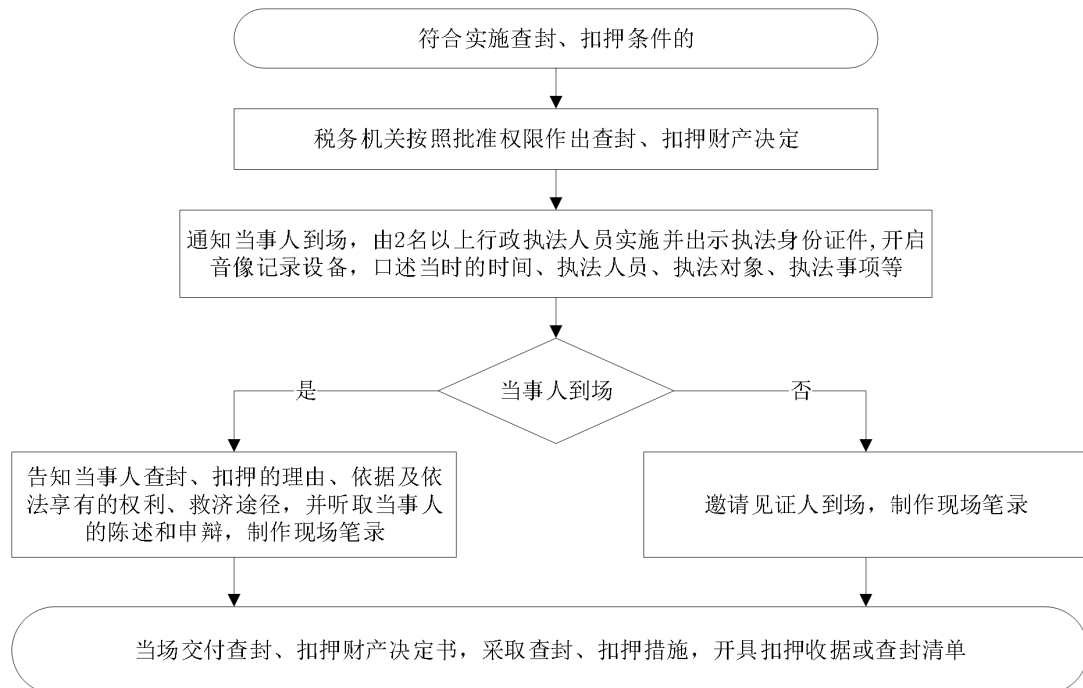


081400 加收滞纳金

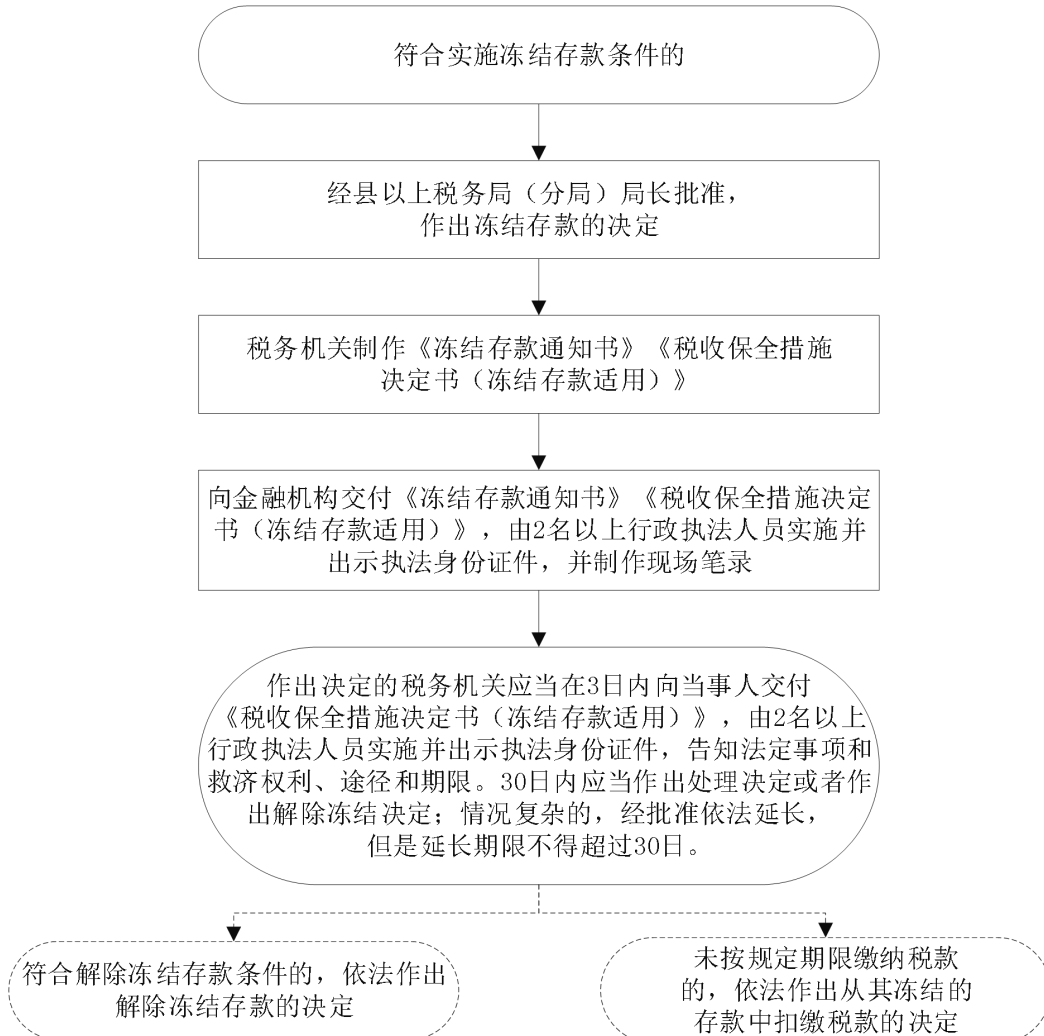


三、监管执法

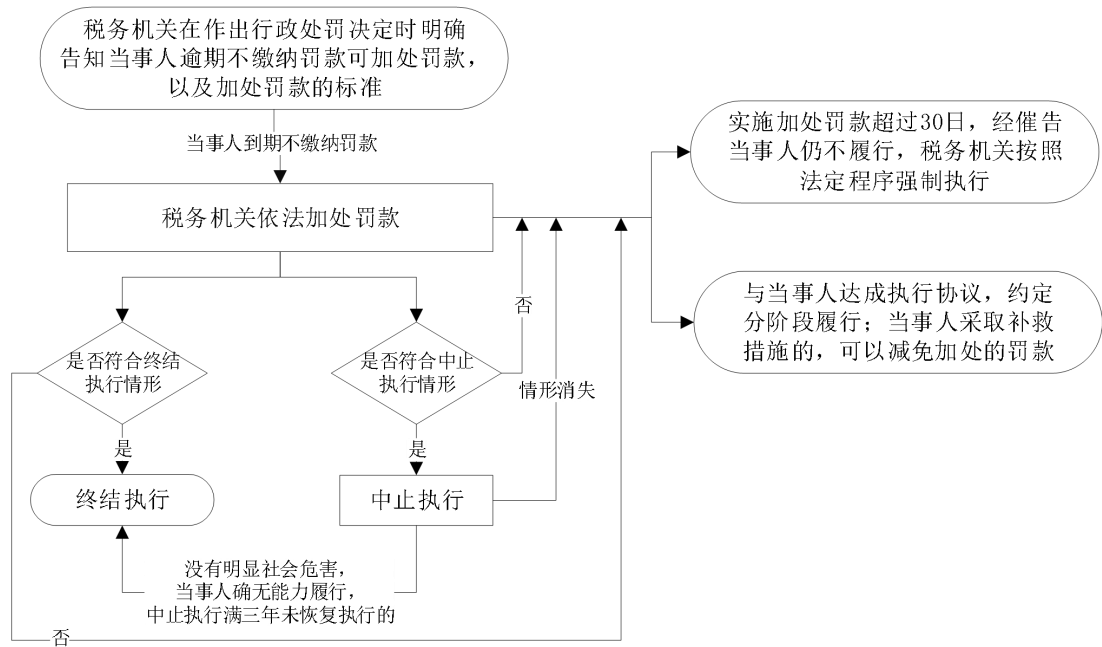
020100 查封、扣押商品、货物或者其他财产



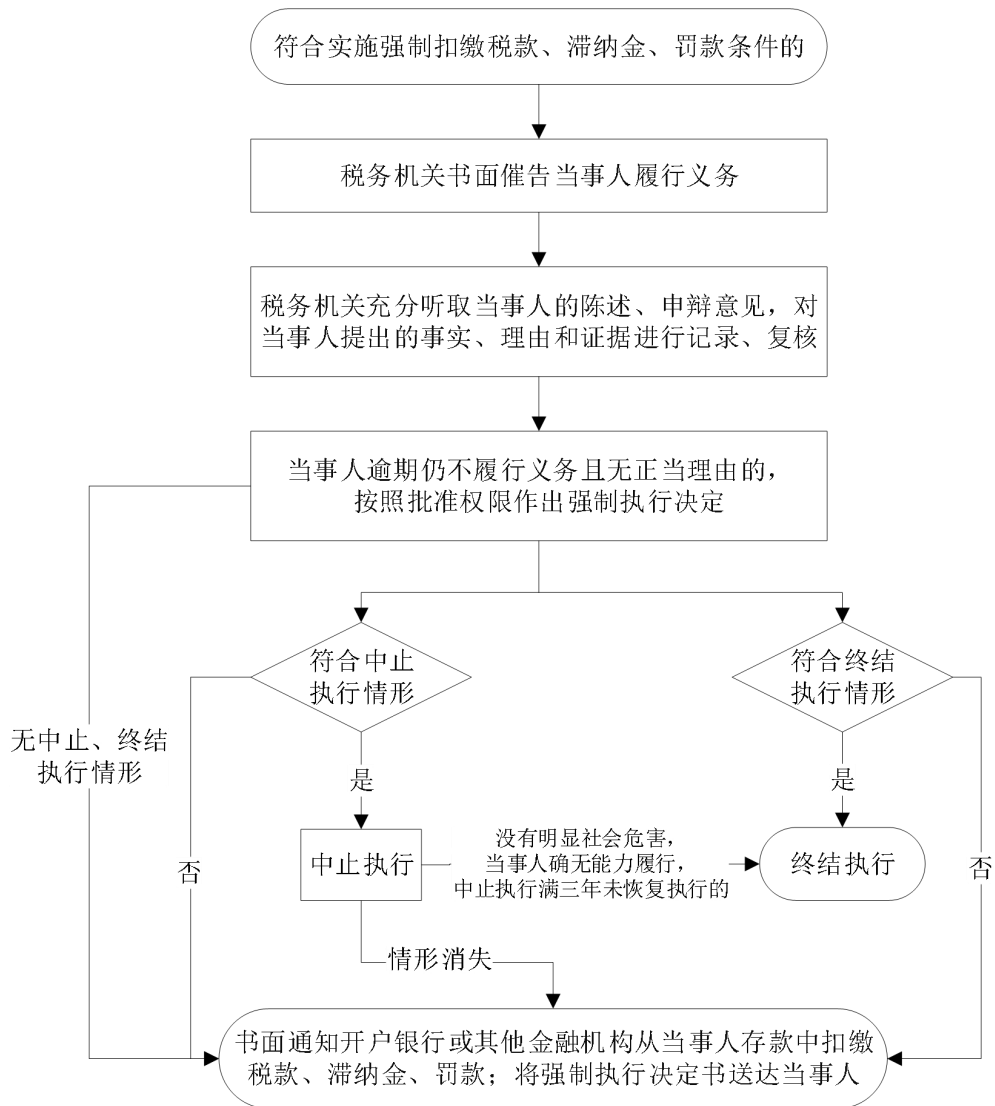
020200 冻结存款



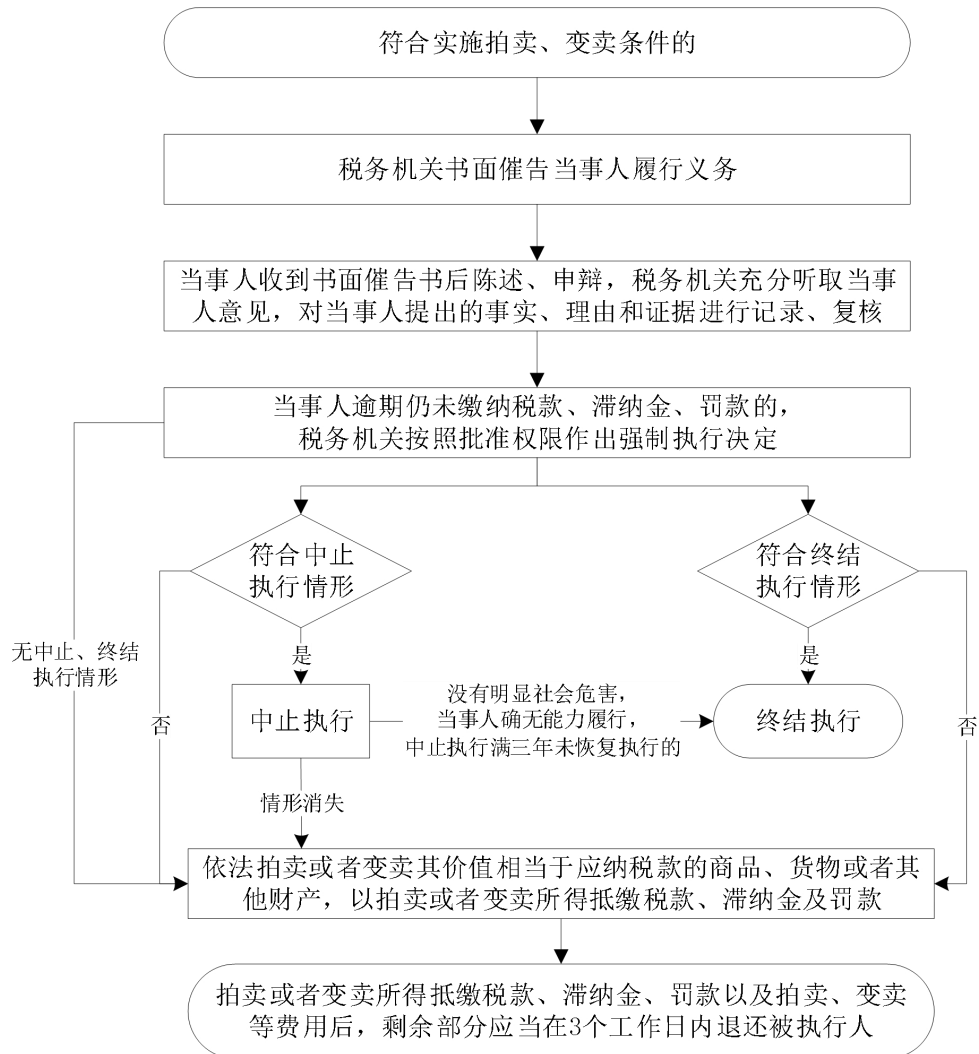
020300 加处罚款



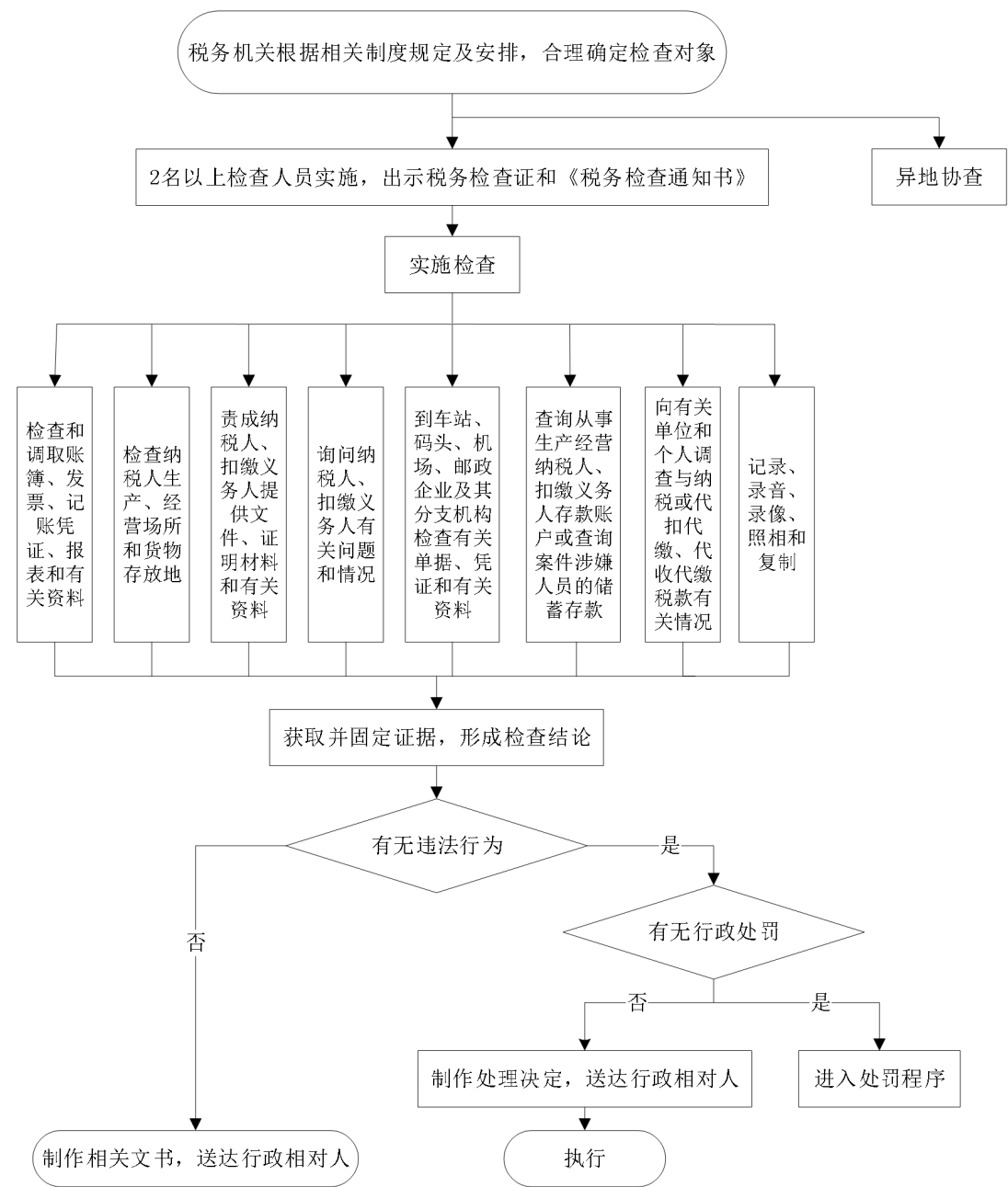
020400 强制扣缴税款、滞纳金、罚款



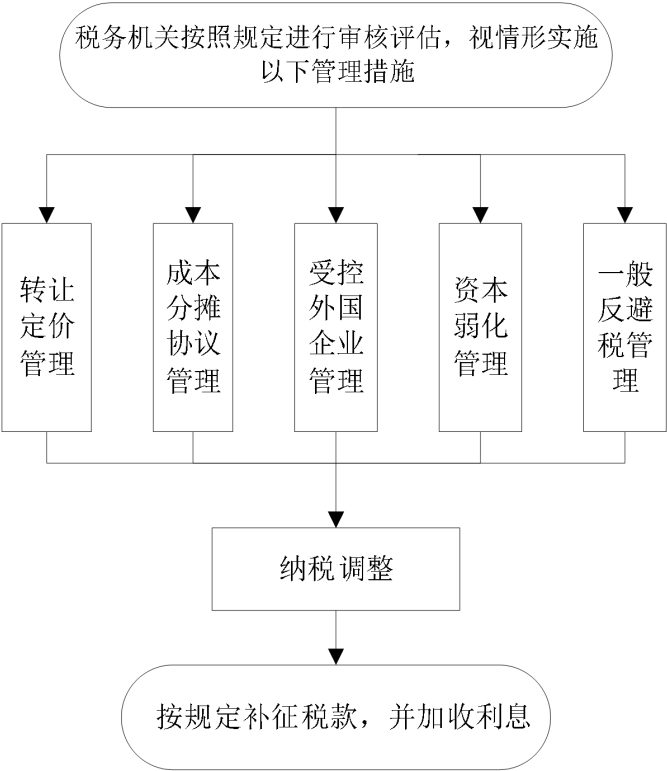
020500 拍卖、变卖商品、货物或者其他财产



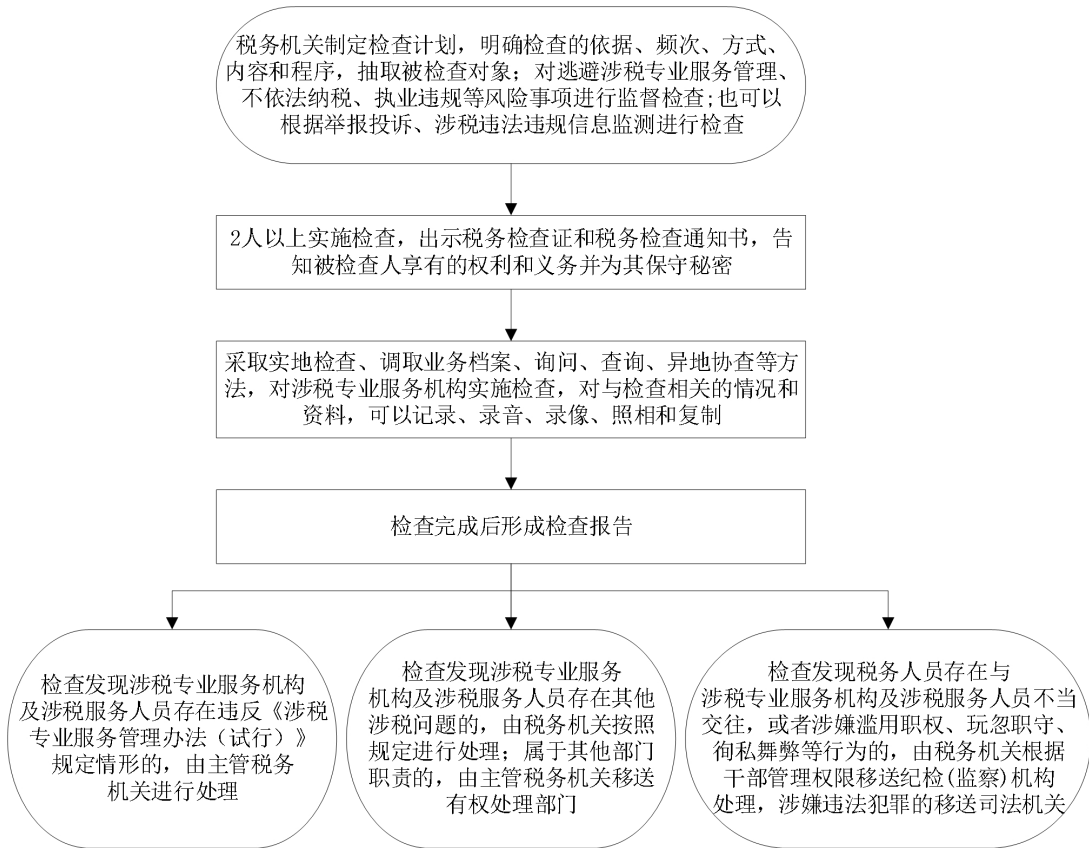
030101—030108 税务检查



030300 纳税调整

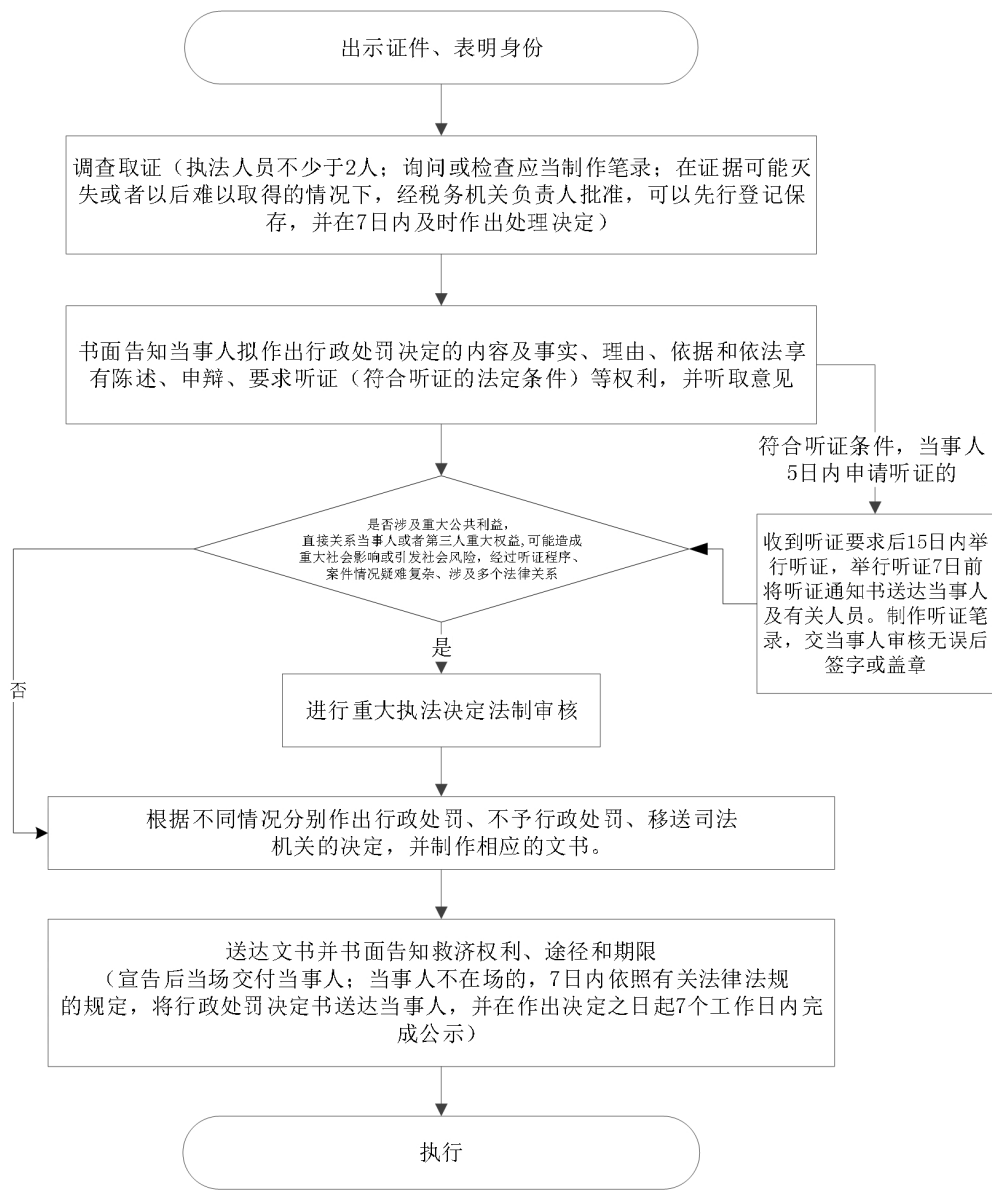


030400 涉税专业服务执业情况检查

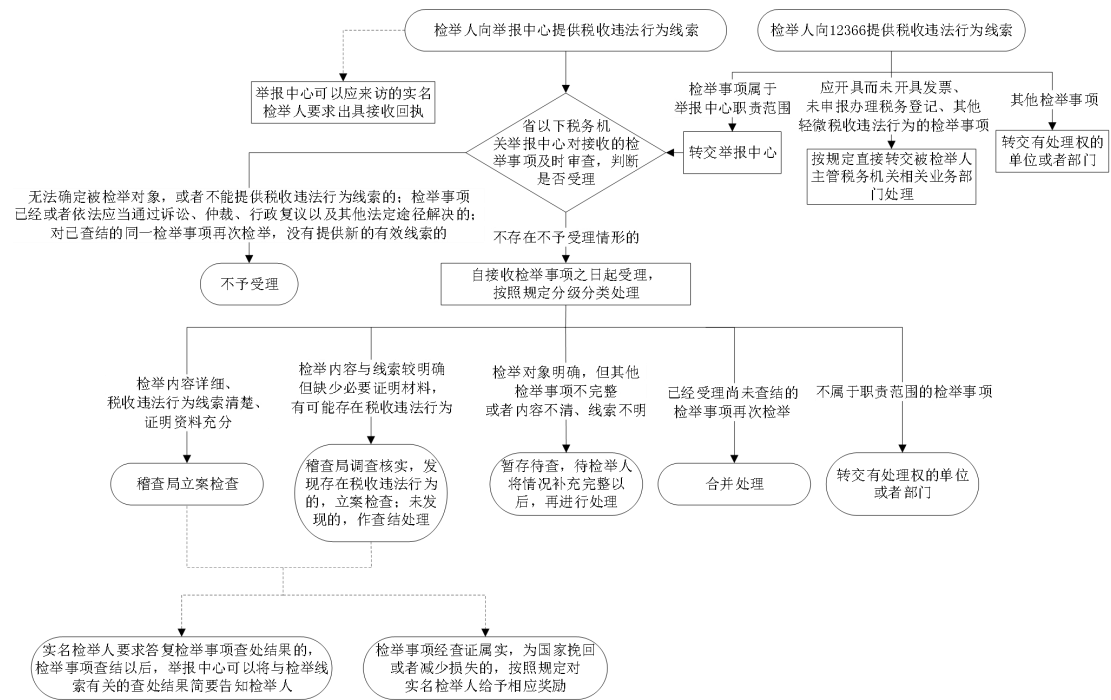


040101—041000 税务行政处罚

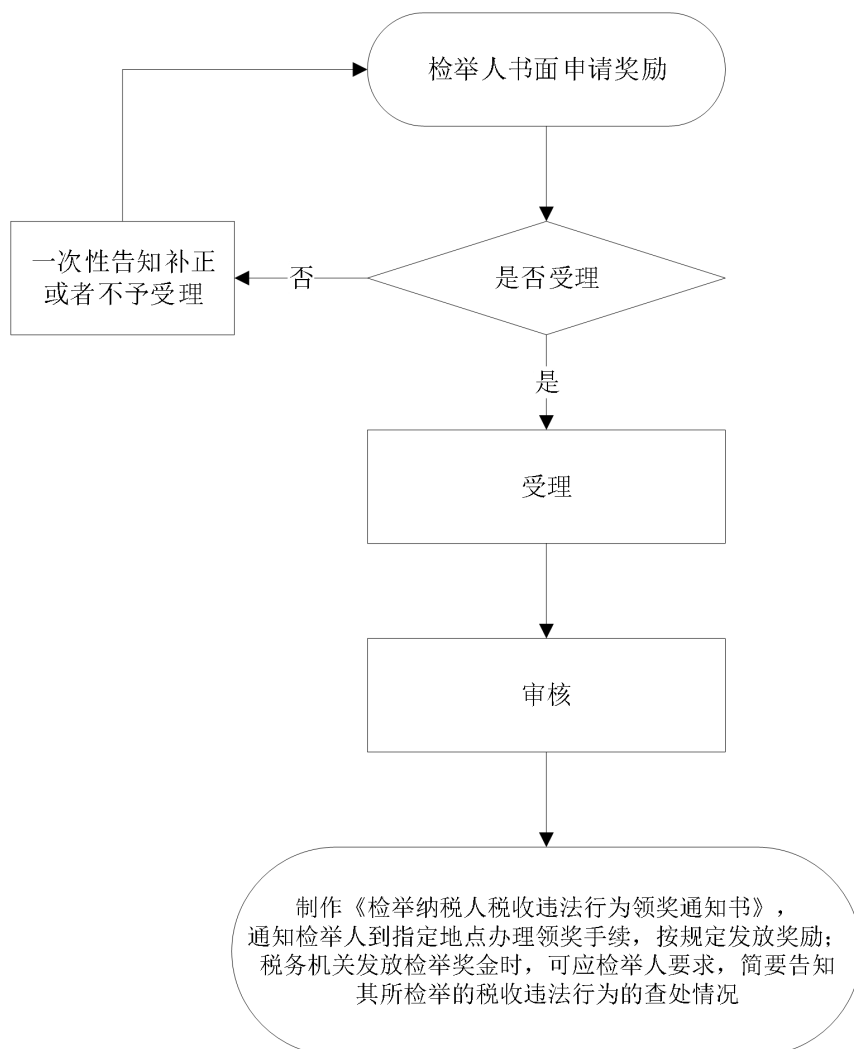
普通程序：



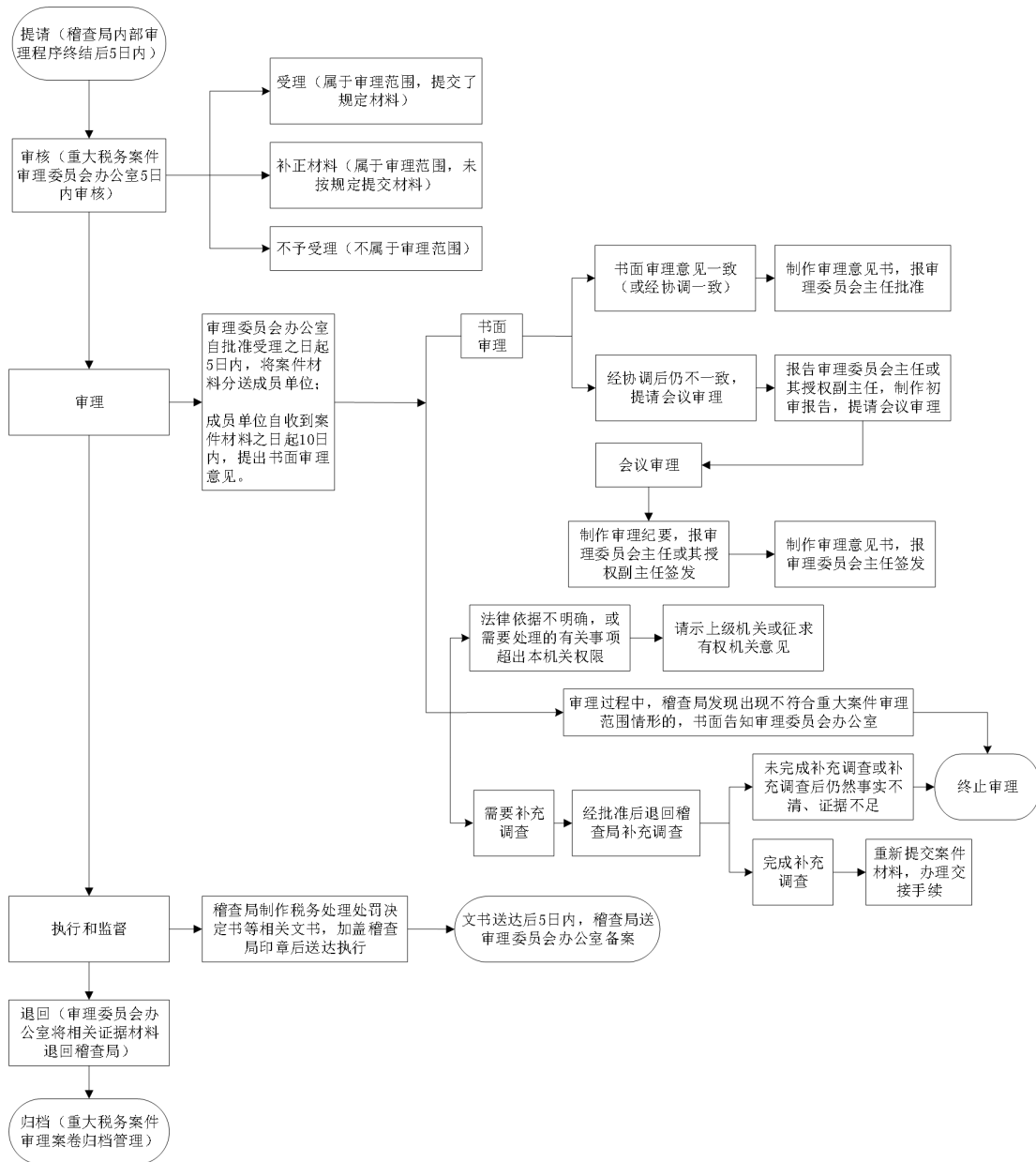
081900 税收违法行为检举管理



070100 对检举税收违法行为的奖励



082000 重大税务案件审理



四、其他

082100 政府信息公开

